



Grapple Loaders & Forest Trailers



**HK 6168
HK 6184**

**MV 1530
MV 1530HD**

**HK 5469
HK 5482**

**MV 1330
MV 1330HD**

**HK 5070
HK 5076**

**MV 1230
MV 1230HD**

The profitable partner for year round loading and forwarding



***Wide angle joint
as standard
equipment***

Combinations in pictures may include optional accessories.

Compare features, quality and equipment – Your choice is Nokka

**HK 6168
HK 6184**

**MV 1530
MV 1530HD**

Excellent reach and hydraulic 4WD for professionals

- Flange mounted Loader models with High King-Boom construction
- 4 slewing cylinders
- Standard 2-levers mechanical valve block
- Gross lifting momentum 61 kNm
- 1 137 / 1 102 kg lifting capacity from 4 m
- Maximum reach 6,8 / 8,4 m
- 2-beam frame Trailer models
- Loading capacity 15 tons
- Hydraulic drawbar with 2 cylinders
- Front screen and 2 pairs of support poles as standard
- 600/50-22.5 ELS tyres
- Hydraulic support legs
- HD trailers pulling force 2 240 kp (600/50-22,5 ELS tyres, 195 bars)



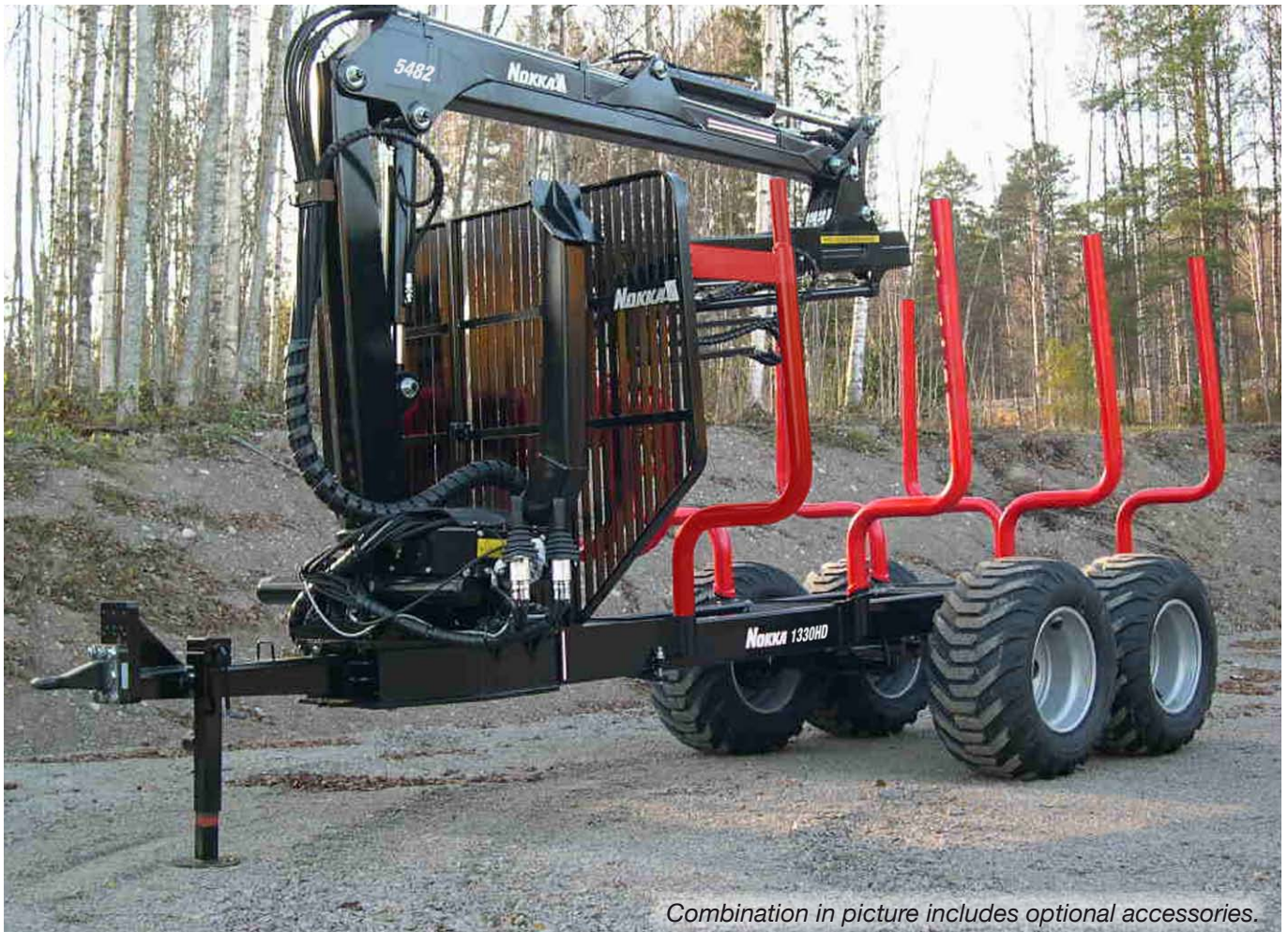
Nokka	HK 6168	HK 6184
Weight with timber grapple	1 320 kg	1 460 kg
Gross lifting momentum	61 kNm	61 kNm
Net lifting momentum	49,4 kNm	45,9 kNm
Swing momentum	15,5 kNm	15,5 kNm
Boom turning angle	400 °	400 °
Maximum reach	6,8 m	8,4 m
Maximum working pressure	174 bar	174 bar
Rec. hydraulic pump capacity	70 l/min	70 l/min
Mounting system	Flange, High Tower	Flange, High Tower
Slewing device	4 cylinders-oil bath/grease	4 cylinders-oil bath/grease
Extension length	1,65 m	2*1,65 m
Lifting capacity 4 meters	1 137 kg	1 102 kg
Lifting capacity max. reach	690 kg	500 kg
Valve block	STD 2-lever	STD 2-lever
Grapple	N23	N23
Rotator	NR 7 with shackle brake	NR 7 with shackle brake
Optional control valve block units	Electric on/off (He), hydraulically pre-controlled (HR) or proportional (HP)	

Nokka	MV 1530	MV 1530HD
Weight without loader	2 390 kg	2 580 kg
Load capacity (speed 0-25km/h)	15 000 kg	15 000 kg
Load capacity (speed 25-45km/h)	11 850 kg	11 850 kg
Total weight	17 390 kg	17 580 kg
Width	253 cm	253 cm
Length	650 + 85 cm	650 + 85 cm
Height	274 cm	274 cm
Length of load space	430 + 85 cm	430 + 85 cm
Front screen	Movable	Movable
Loading area	3,0 m ²	3,0 m ²
Track width	193 cm	193 cm
Ground clearance	73 cm	73 cm
Tyres	600/50-22.5 ELS	600/50-22.5 ELS
Optional accessories	Hydraulic brakes on 1 or 2 axles, frame extension, lighting device, support poles and extra frame for support poles, hydraulic aggregate	

**HK 5469
HK 5482**
**MV 1330
MV 1330HD**

The powerful Nokka Grapple Loader and robust 2-beam Forest Trailer

- Flange mounted Loader models with High King-Boom construction
- 4 slewing cylinders
- Standard 2-levers mechanical valve block
- Gross lifting momentum 54 kNm
- 1 031 / 964 kg lifting capacity from 4 m
- Maximum reach 6,9 / 8,2 m
- 2-beam frame Trailer models
- Loading capacity 13 tons
- Hydraulic drawbar with 2 cylinders
- Front screen and 2 pairs of support poles as standard
- 500/55-17 or 550/45-22.5 ELS tyres
- Hydraulic support legs
- HD trailers pulling force 1 675 kp (550/45-22,5 ELS tyres, 195 bars)



Combination in picture includes optional accessories.

Nokka	HK 5469	HK 5482
Weight with timber grapple	1 200 kg	1 280 kg
Gross lifting momentum	54 kNm	54 kNm
Net lifting momentum	43,7 kNm	40,5 kNm
Swing momentum	15,0 kNm	15,0 kNm
Boom turning angle	400 °	400 °
Maximum reach	6,9 m	8,2 m
Maximum working pressure	165 bar	160 bar
Rec. hydraulic pump capacity	60 l/min	60 l/min
Mounting system	Flange, High Tower	Flange, High Tower
Slewing device	4 cylinders-oil bath/grease	4 cylinders-oil bath/grease
Extension length	1,60 m	2*1,59 m
Lifting capacity 4 meters	1 031 kg	964 kg
Lifting capacity max. reach	580 kg	430 kg
Valve block	STD 2-lever	STD 2-lever
Grapple	N20	N20
Rotator	NR 5 with shackle brake	NR 5 with shackle brake
Optional control valve block units	Electric on/off (He), hydraulically pre-controlled (HR) or proportional (HP)	

Nokka	MV 1330	MV 1330HD
Weight without loader	2 300 kg	2 490 kg
Load capacity (speed 0-25km/h)	13 000 kg	13 000 kg
Load capacity (speed 25-45km/h)	11 850 kg	11 850 kg
Total weight	15 300 kg	15 490 kg
Width	233 / 238 cm	238 cm
Length	650 + 85 cm	650 + 85 cm
Height	266 / 262 cm	262 cm
Length of load space	430 + 85 cm	430 + 85 cm
Front screen	Movable	Movable
Loading area	3,0 m ²	3,0 m ²
Track width	183 / 188 cm	188 cm
Ground clearance	64 / 71 cm	71 cm
Tyres	500/55-17 or 550/45-22.5 ELS	550/45-22.5 ELS
Optional accessories	Hydraulic brakes on 1 or 2 axles, frame extension, lighting device, support poles and extra frame for support poles, hydraulic aggregate	

HK 5070
HK 5076

MV 1230
MV 1230HD

Strong Nokka combination for demanding loading and forwarding

- Flange mounted Loader models with High King-Boom construction
- 4 slewing cylinders
- Standard 2-levers mechanical valve block
- Gross lifting momentum 50 kNm
- 995 / 920 kg lifting capacity from 4 m
- Maximum reach 7,0 / 7,6 m
- 2-beam frame Trailer models
- Loading capacity 12 tons
- Hydraulic drawbar with 2 cylinders
- Front screen and 2 pairs of support poles as standard
- 500/55-17, 550/45-22.5 ELS or 600/50-22.5 ELS tyres
- Hydraulic support legs
- HD trailers pulling force 1 675 kp (550/45-22,5 ELS tyres, 195 bars)



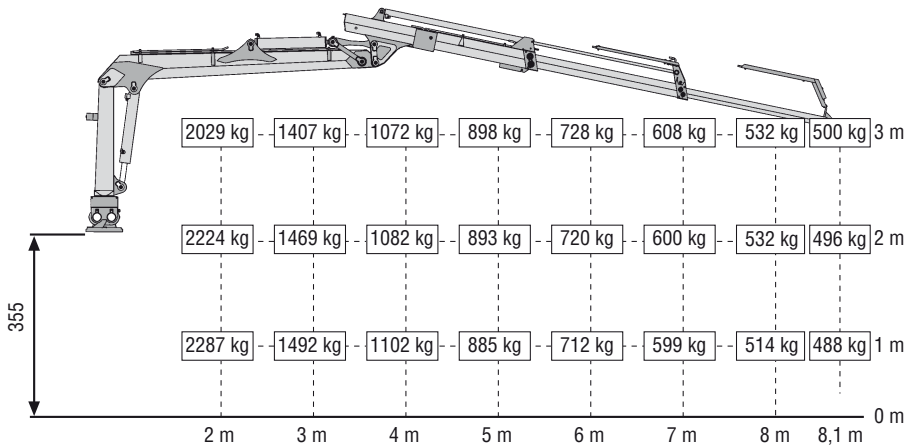
Nokka	HK 5070	HK 5076
Weight with timber grapple	1 150 kg	1 210 kg
Gross lifting momentum	50 kg	50 kg
Net lifting momentum	40,5 kNm	35,6 kNm
Swing momentum	13,9 kNm	13,9 kNm
Boom turning angle	400 °	400 °
Maximum reach	7,0 m	7,6 m
Maximum working pressure	182 bar	182 bar
Rec. hydraulic pump capacity	50 l/min	50 l/min
Mounting system	Flange, High Tower	Flange, High Tower
Slewing device	4 cylinders-oil bath/grease	4 cylinders-oil bath/grease
Extension length	1,60 m	2*1,25 m
Lifting capacity 4 meters	995 kg	920 kg
Lifting capacity max. reach	507 kg	394 kg
Valve block	STD 2-lever	STD 2-lever
Grapple	N20	N20
Rotator	NR 5 with shackle brake	NR 5 with shackle brake
Optional control valve block units	Electric on/off (He), hydraulically pre-controlled (HR) or proportional (HP)	

Nokka	MV 1230	MV 1230HD
Weight without loader	2 100 kg	2 290 kg
Load capacity (speed 0-25km/h)	12 000 kg	12 000 kg
Load capacity (speed 25-45km/h)	11 850 kg	11 850 kg
Total weight	14 100 kg	14 290 kg
Width	233 / 238 / 253 cm	233 / 238 / 253 cm
Length	580 + 85 cm	580 + 85 cm
Height	266 / 262 / 274 cm	269 / 262 / 274 cm
Length of load space	360 + 85 cm	360 + 85 cm
Front screen	Movable	Movable
Loading area	3,0 m ²	3,0 m ²
Track width	183 / 188 / 193 cm	183 / 188 / 193 cm
Ground clearance	66 / 71 / 73 cm	69 / 71 / 73 cm
Tyres	500/50-17, 550/45-22.5 ELS or 600/50-22.5 ELS	500/50-17, 550/45-22.5 ELS or 600/50-22.5 ELS
Optional accessories	Hydraulic brakes on 1 or 2 axles, frame extension, lighting device, support poles and extra frame for support poles, hydraulic aggregate	

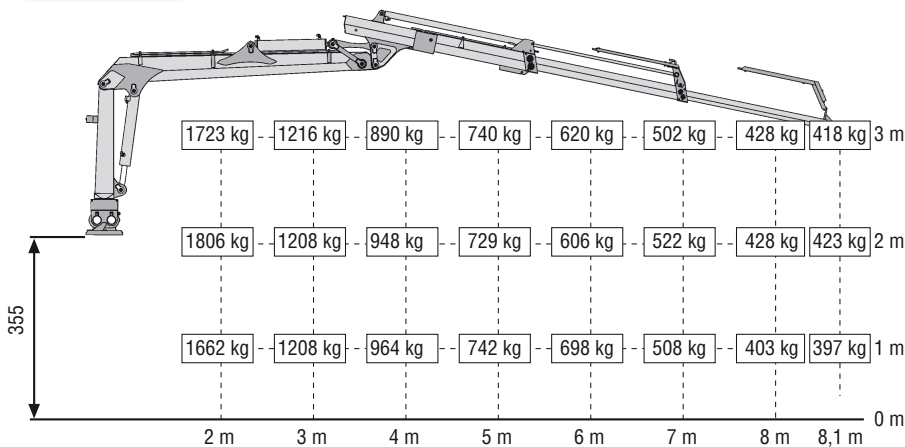
Lifting capacities of Nokka Loaders

HK 6184

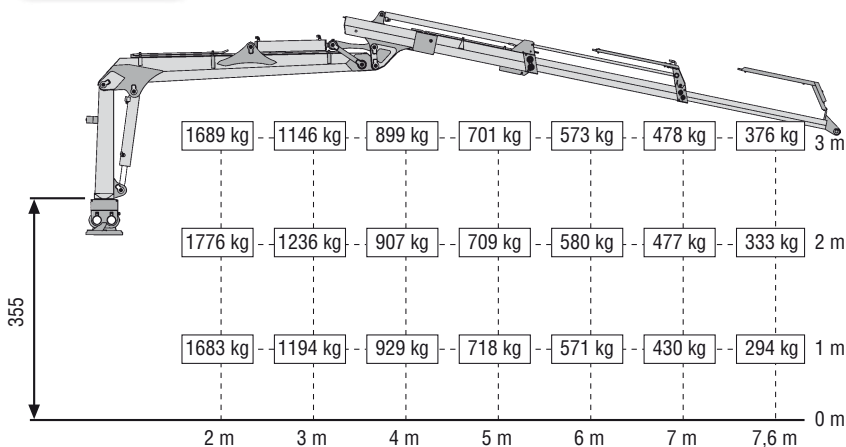
without grapple and rotator



HK 5482



HK 5076



Nokka lifts up to its promise...

Nokka loaders maintain their lifting capacity also when lifting high. This increases productivity because heavy loads can be lifted over support poles with just one move.

...and doesn't freeze in between



Warranty

Manufacturer grants 2 year warranty for booms, which are made of RAEX 650MS OPTIM Fine Steel. The latest Finnish know-how and technology are used in the welding procedure.*

Well equipped Nokka forest machines



100-series forest trailer has good ground clearance and many tyre alternatives.



Wide spreading fold down support legs.



Adjustable frame for support poles.

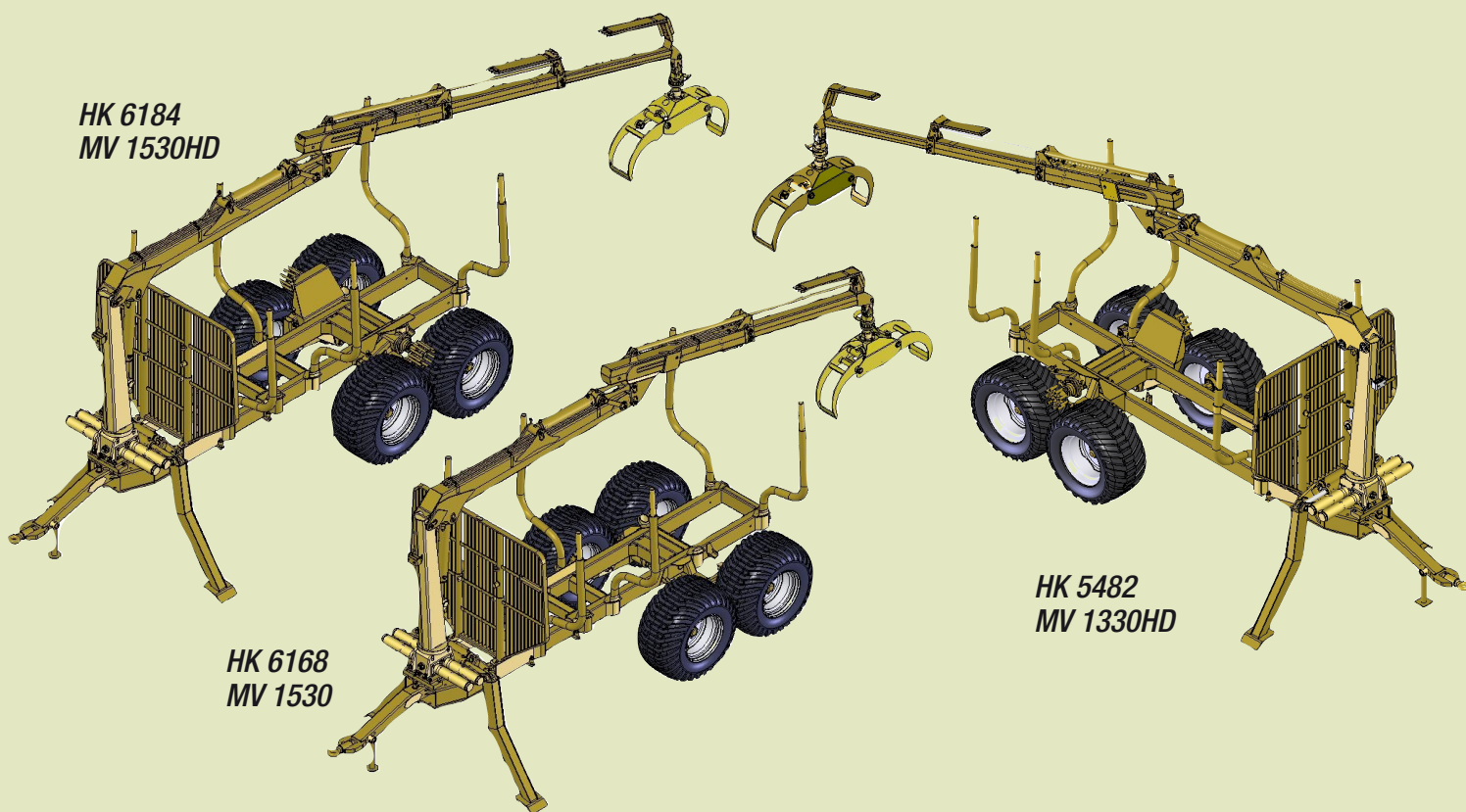


Telescopic support legs take little space.



The non-skid drive is due to specially ribbed tires which adjust like a gear type connection between the drive rolls and the tires.

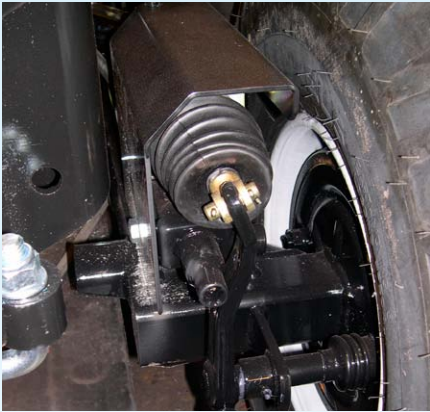
Nokka forest machines are designed by using solid works high technology



HK 6184
MV 1530HD

HK 6168
MV 1530

HK 5482
MV 1330HD



Pneumatic brakes on one and two axle.



Hydraulic brakes on one and two axle.



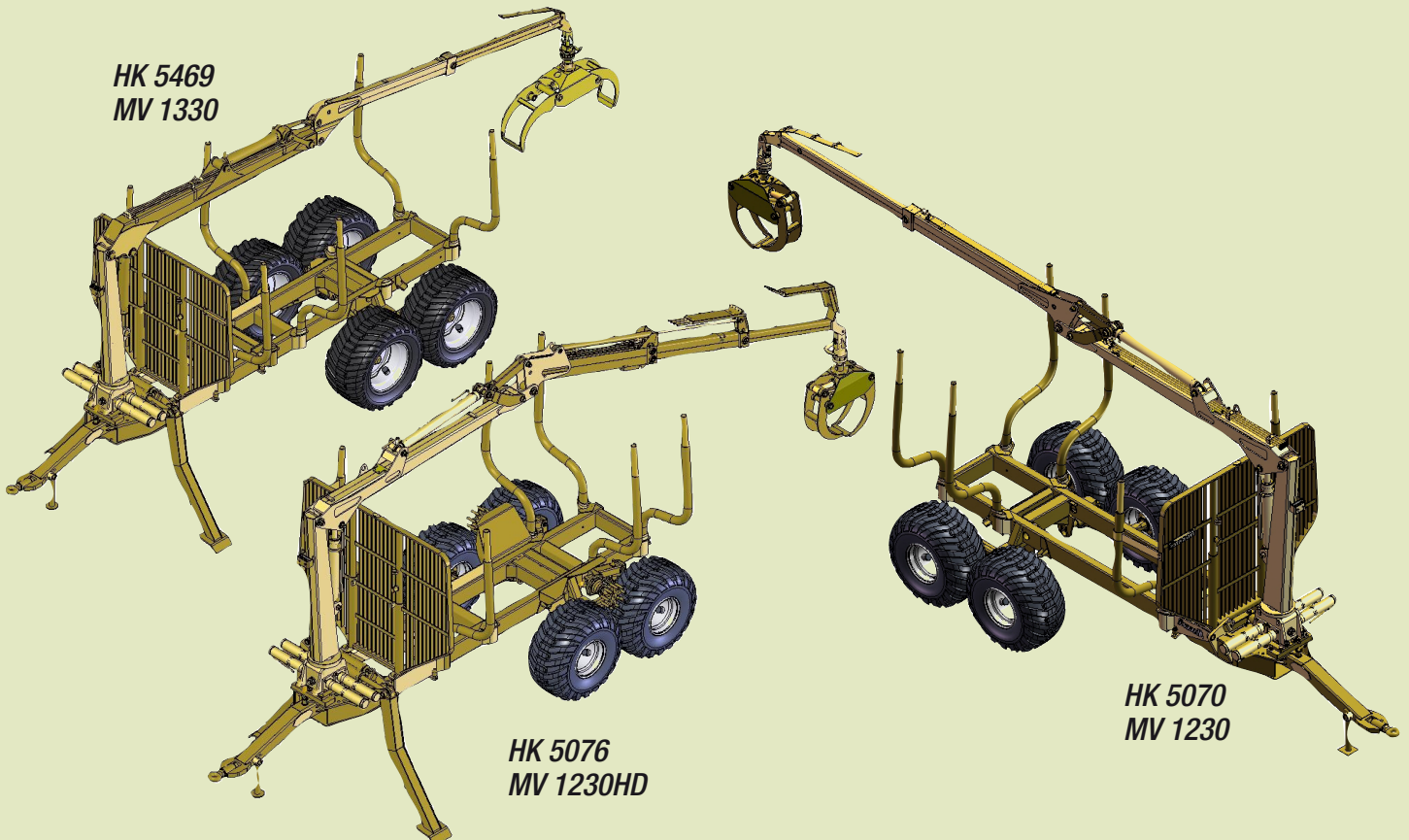
Telescopic frame extension and lighting device



Shackle brake as standard equipment.



Hydraulically movable front screen (only for factory setting).



**HK 5469
MV 1330**

**HK 5076
MV 1230HD**

**HK 5070
MV 1230**

High Quality Valve Systems



Mechanical 2-lever valve block in the cabin. (Std)



On/off 2-lever valve block (He). Hydraulic extension and grapple used electrically. Valve block mounted in the cabin.



Hydraulically pre-controlled (HR) or proportional (HP) valve block. Joysticks situated in the cabin.

Reliable Rotators

Rotator model	NR5	NR7
Slewing radius	Unlimited	Unlimited
Working pressure max.	200 bar	200 bar
Volume	420 cm ³	464 cm ³
Turning moment (175 bar)	900 Nm	1150 Nm
Axial power max.	60 kN	82 kN
Max. loading	4000 kg	5500 kg
Weight	20 kg	27 kg

Strong Grapples



Grapple model	N20	N23
Cylinder Ø	80/50 mm	80/50 mm
Max. opening mm	1350 mm	1360 mm
Width	255 mm	310 mm
Area	0,20 m ²	0,23 m ²
Power of cylinder	8545 kg	8795 kg
Weight	110 kg	122 kg
Rotator alternatives	NR3 / NR5	NR5 / NR7

NOKKA OY

FI-40950 Muurame
Finland
Tel. +358 44 76 24 505
Fax +358 14 31 00 205
nokka@nokka.fi
www.nokka.fi